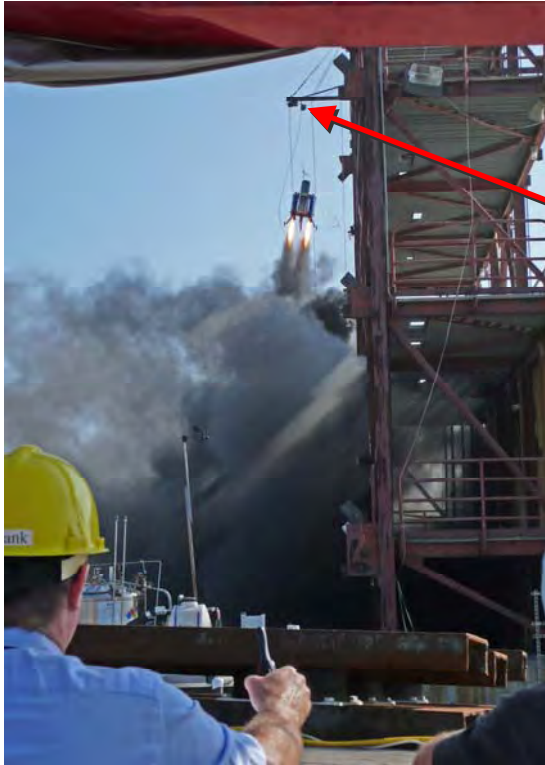


SpaceDev trusts DEUS Rescue in Critical Moon Lander Rocket Test.



The SpaceDev rocket was mounted beside a gantry tower. A custom emergency descent system, manufactured by DEUS Rescue, was attached to the top of the gantry tower and then attached to the nose of the rocket with a DEUS™ emergency rope made by Sterling Rope.

See video and more photographs:

www.DEUSrescue.com, www.sterlingrope.com and www.spacedev.com.

SpaceDev's rocket scientists developed a first-of-a-kind, robotically controlled hybrid rocket to power a planned spacecraft to land on the moon. When SpaceDev wanted to test it, they called DEUS Rescue. The need: an absolutely reliable emergency descent system attached to the nose of the rocket to lower it safely back to earth...just in case. SpaceDev wanted to avoid damaging a priceless rocket in the race to establish a permanent space station on the moon.



DEUS Rescue teamed up with Sterling Rope to develop a custom descent system for SpaceDev's test.

The objective of SpaceDev's test was to fire their hybrid rocket motor, make it ascend, hover, move up and down under remote control, and land safely. The rocket fired successfully on 2-Nov-07 at 2:47 p.m., ascended, hovered, and moved up and down under remote control. However, descent during landing was too fast. The DEUS/Sterling Rope descent system "caught" the rocket, just as designed, and lowered it safely to the ground. A perfect test.

Frank Macklin, SpaceDev's V.P. of engineering said, "The descent system worked perfectly and the service DEUS provided was outstanding."

When lives are on the line, trust DEUS Rescue.



DEUS • RESCUE

info@DEUSrescue.com ■ 866.405.3461 ■ www.DEUSrescue.com